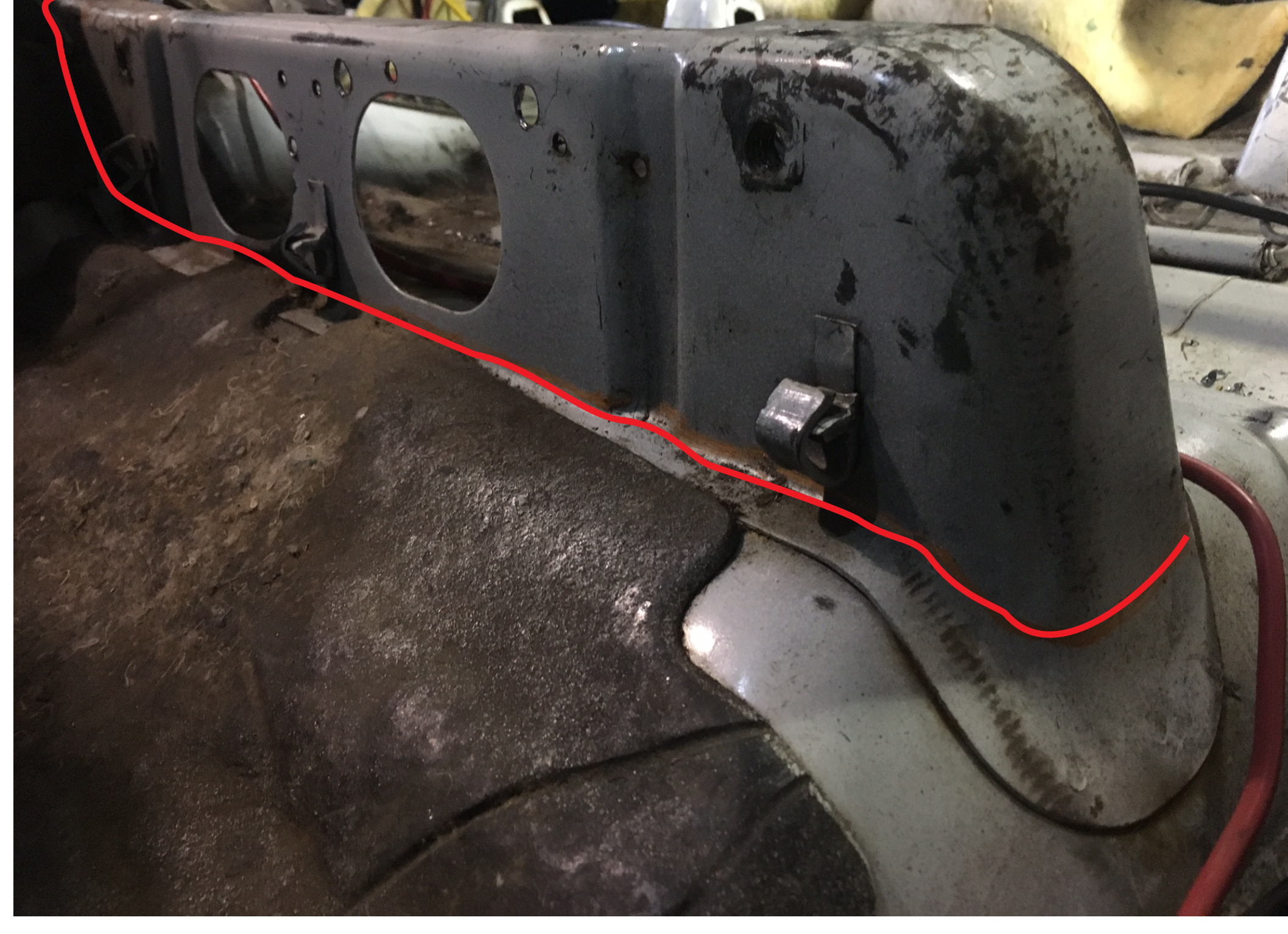


The following instructions illustrate installation on the left (drivers side). The procedure is the same for the passengers side with out the need to remove the jack mount. Start by removing both seats, center console, jack, tool kit and parking brake assembly. No need to disconnect the parking brake just remove the bolts holding to the floor.



The jack mounts will need to be cut and removed

Cut and remove the front seat support along the indicated line. An air saw or Sawzall works well here. When done grind the cut edges flush with the floor.

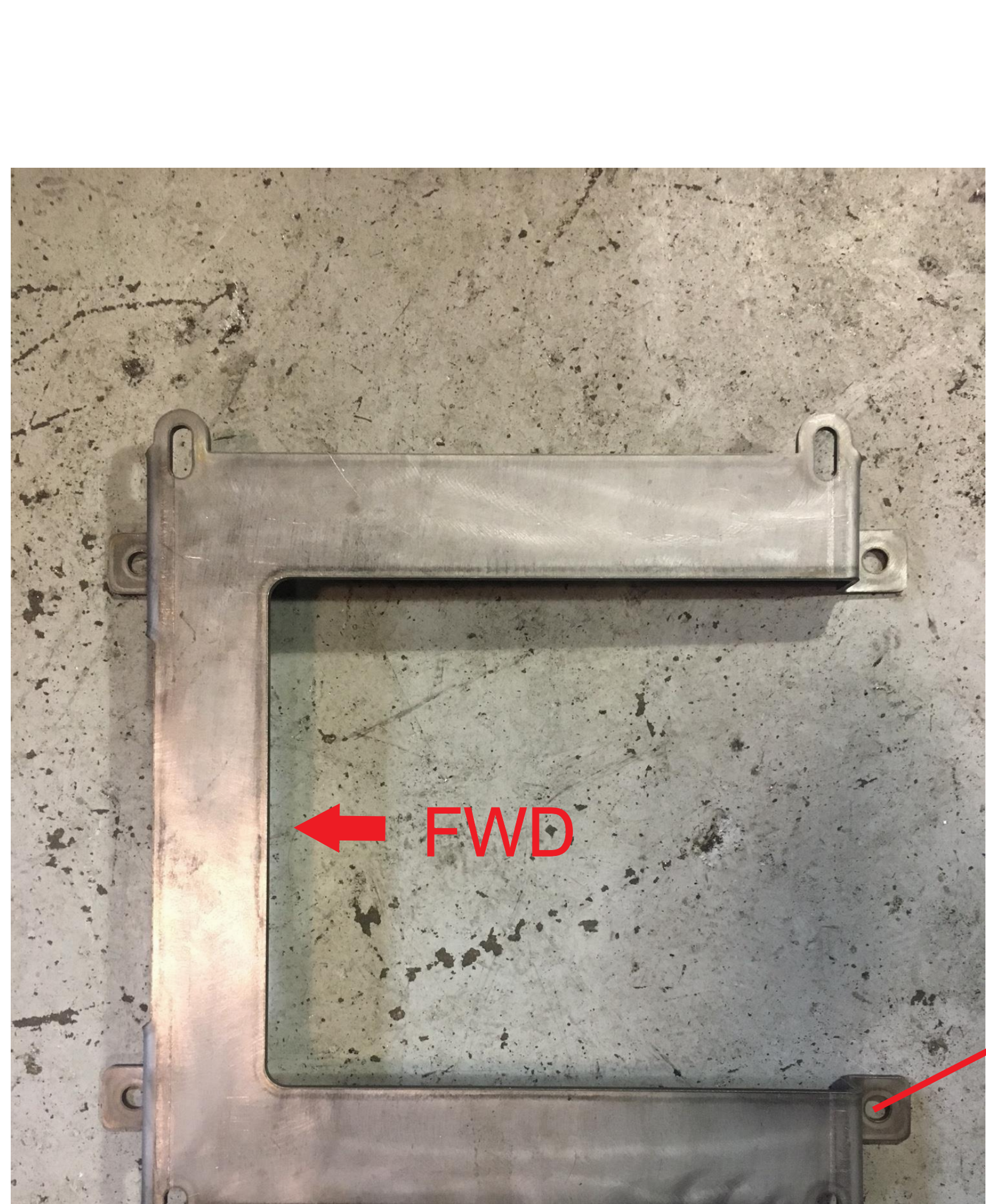


The floor in this area should look something like this when done



Mark and drill a 1/2" hole in the center of the left rear seat support flange. This hole will serve to locate the new seat bracket.

Next cut and remove the rear seat supports. Both supports need to be cut off at the floor.



Align new seat bracket with the 1/2" hole drilled previously. This bracket should sit square with the vehicle. Drill the remaining 3 holes in the floor.

← FWD

LOCATING HOLE